

# IceCube Overview

IceCube Upgrade Rebaseline Review

April 26-28, 2022

Kael Hanson – IceCube Upgrade Principal Investigator

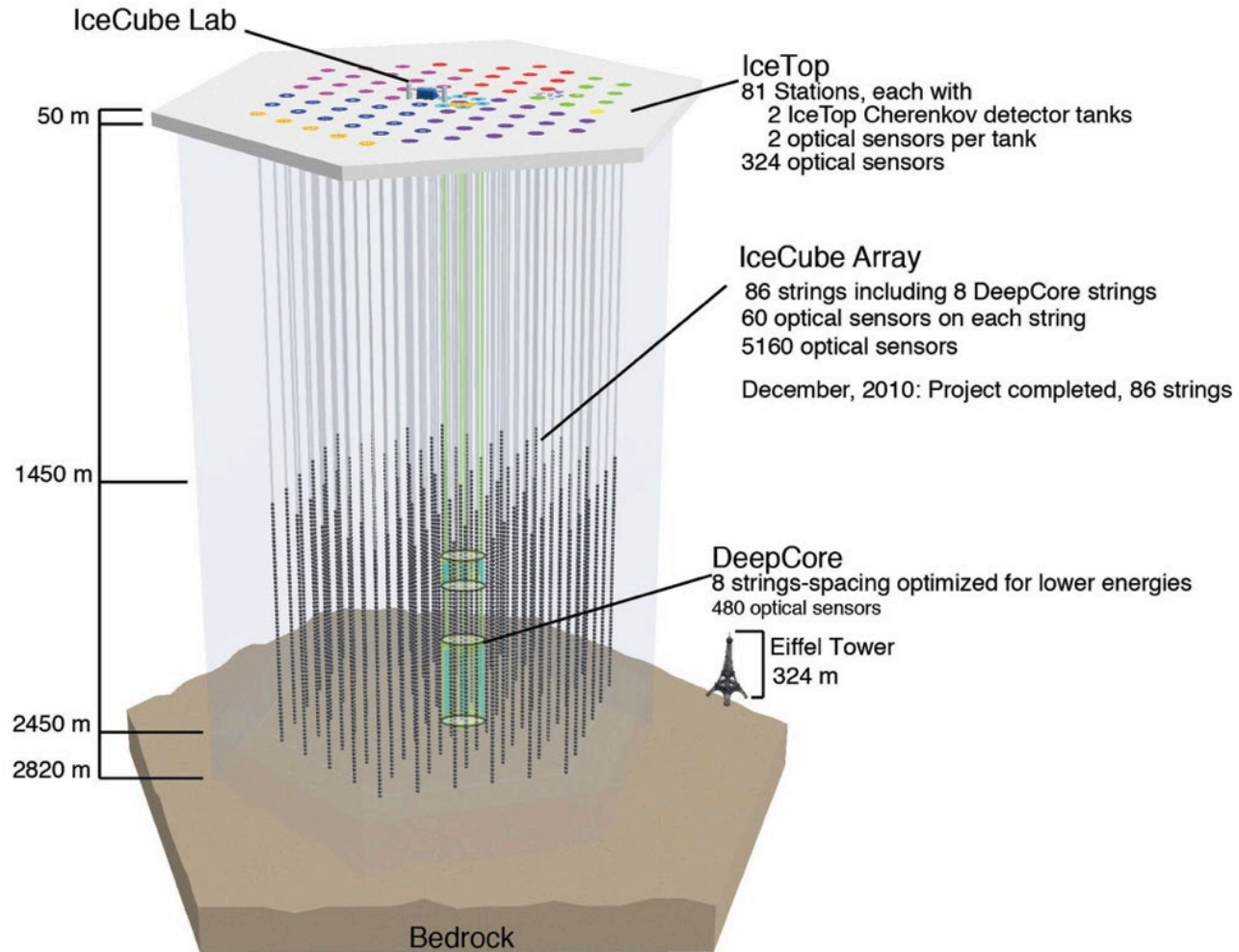


# Brief Bio – Kael Hanson

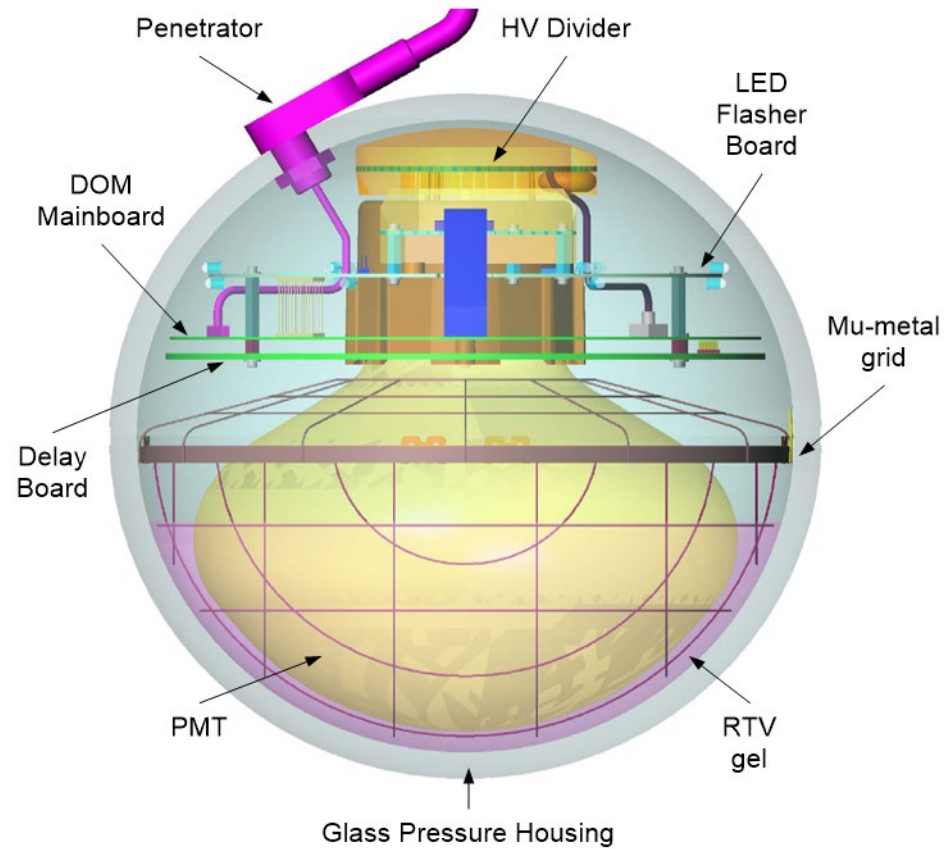
**Education** University of Michigan (2000) PhD  
Physics MACRO detector at Gran Sasso

- Joined IceCube @ UPenn in 2000 when it was still AMANDA.
- Began with UW-Madison in 2002 shortly after IceCube MREFC started as postdoc.
- Led In-Ice Devices (2003-2006) and Instrumentation (2006-2008)
- Spent 6 years as faculty at Université Libre de Bruxelles (2008-2014)
- Rejoined UW-Madison as faculty / IceCube Director (2014)
- PI of Upgrade project.

# IceCube: The Detector Array



# IceCube Detector Element: The Digital Optical Module





# Detecting Neutrinos in the Ice

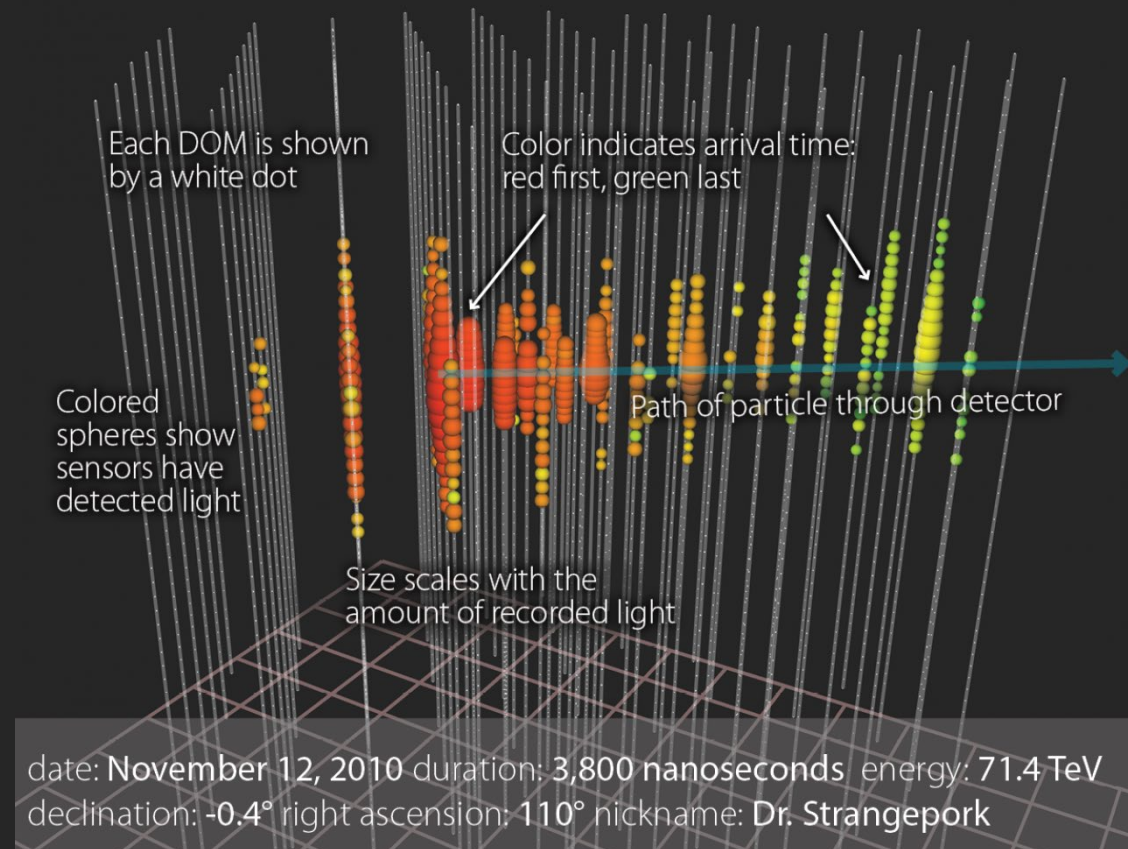
IceCube is a “water” Cherenkov detector: we detect the charged ultra-relativistic secondaries which are produced in neutrino scattering in ice or detect CR muons and their stochastic secondaries.

Ice is a good calorimetric medium.

Something about angular resolution.

## How does IceCube work?

When a neutrino interacts with the Antarctic ice, it creates other particles. In this event graphic, a muon was created that traveled through the detector almost at the speed of light. The pattern and the amount of light recorded by the IceCube sensors indicate the particle's direction and energy.



# The IceCube Upgrade

Infill array for neutrino physics and precision characterization of the ice.

# Science Requirements

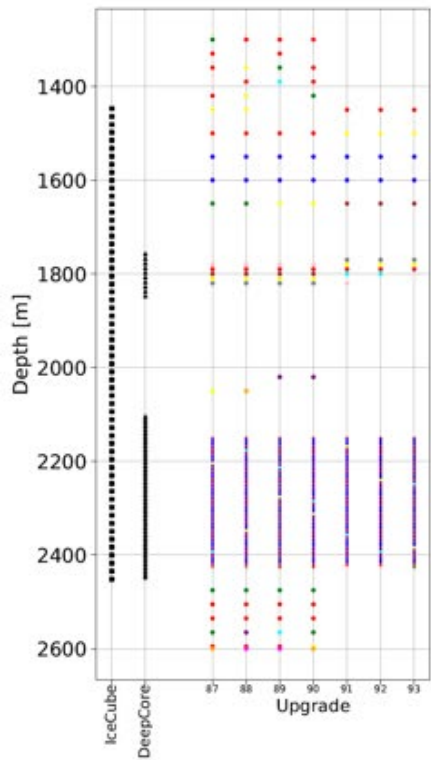
		SCIENCE OBJECTIVES - THE ICECUBE UPGRADE										
		Tau Neutrino Appearance and the Unitarity of the PMNS Matrix (2.1)	Neutrino Oscillations (2.2)	Sterile Neutrinos (2.2)	Indirect Dark Matter (2.2)	Ice Characterization for better LE & HE flavor physics (2.3)						
PRIMARY SCIENCE REQUIREMENTS	Event Energy Range	few to 100 GeV	few to 100 GeV			TeV to >PeV						
	Expected Detectable Event Rate	Measurement in 2-3 years	5-10% tau measurement	Any detection/improved limit	Any detection/improved limit	100s / year						
	Desired Angular Resolution	<5 deg at O(20 GeV)										
	Time Resolution Within Event	2-5 ns	2-5ns									
	Absolute Time Accuracy					50 ns						
Ice Sensor Array Geometry	Instrumented Ice Volume	About 2 million cubic meters							√	√	√	√
	Array Shape	Compact							√	√	√	√
	Effective Volume	Varies with energy level and event orientation (derived from other properties)							√	√	√	√
	Number of Strings	7							√	√	√	√
	multi-PMT Digital Optical Modules (mDOM) per String	108 (90 in the dense physics region, others above and below for primarily calibration purposes) - 46 mDOMs, 38 D-Eggs, & 6 pDOMs							√	√	√	√
	Total Number of mDOM	~750 (photocathode area is key parameter here)							√	√	√	√
	mDOM Spacing - Horizontal	22 meters (compromise between closer and drill constraints)							√	√	√	√
	mDOM Spacing - Vertical	3.0 m							√	√	√	√
	Detector Depth	Physics region: 2150-2425m Upper region: 1450-2150 Deep region: 2425-2600m							√	√	√	√
Individual mDOM Performance	Sensitivity of mDOM	Single Photo Electron (SPE)							√	√	√	√
	mDOM Photon Event Dynamic Range	SPE to >200 PE / 15 ns							√	√	√	√
	mDOM Field of View	Spherical with <10% variation, except for cable shaddowing.							√	√	√	√
	Digitization Rate Waveforms < 400 ns	300 megasamples / second							√	√	√	√
	Digitization Rate Waveforms > 400 ns	40 megasamples / second							√	√	√	√
	Absolute Amplitude Calibration Accuracy	< 5 %							√	√	√	√
	Timing Accuracy	< 5 ns							√	√	√	√
Event / Background Discrimination (Noise Reduction)	mDOM Noise Rate	O(10kHz) total noise rate, <850 Hz per PMT							√	√	√	√
	mDOM Data Processing	Initial waveform capture and digitization in DOM, context sensitive compression of data prior to transfer							√	√	√	√
	Local Coincidence Function	In mDOMs, might require N of 24 PMTs hit within time window to suppress noise.							√	√	√	√
	Event Trigger Function	Global (surface) trigger logic to package event data and discriminate noise							√	√	√	√
	Veto Function	Surface Array (IceTop) allows identification and discrimination of downgoing background							√	√	√	√
Data Transport and Storage	Incoming Data Stream from Sensor Array	150 Gig / day							√	√	√	√
	Non-Volatile Storage at South Pole	1-2 Day Buffer / Archive Capacity & Full Redundancy Requirements						√			√	
	South Pole High Priority Communications	At all times, it must be possible to complete a minimum 10KB transfer to the Northern Hemisphere within 10 minute period. (SNEWS and GRB Reporting)						√			√	
	South Pole Medium Priority Communications	500 MB / day						√			√	
	South Pole High Volume Data Transfer	>30 GB / day						√			√	
	Northern Hemisphere Data Warehouse	Fully Buffered / Archive Capacity & Redundancy Requirements						√			√	

# Scientific Goals → Technical Requirements

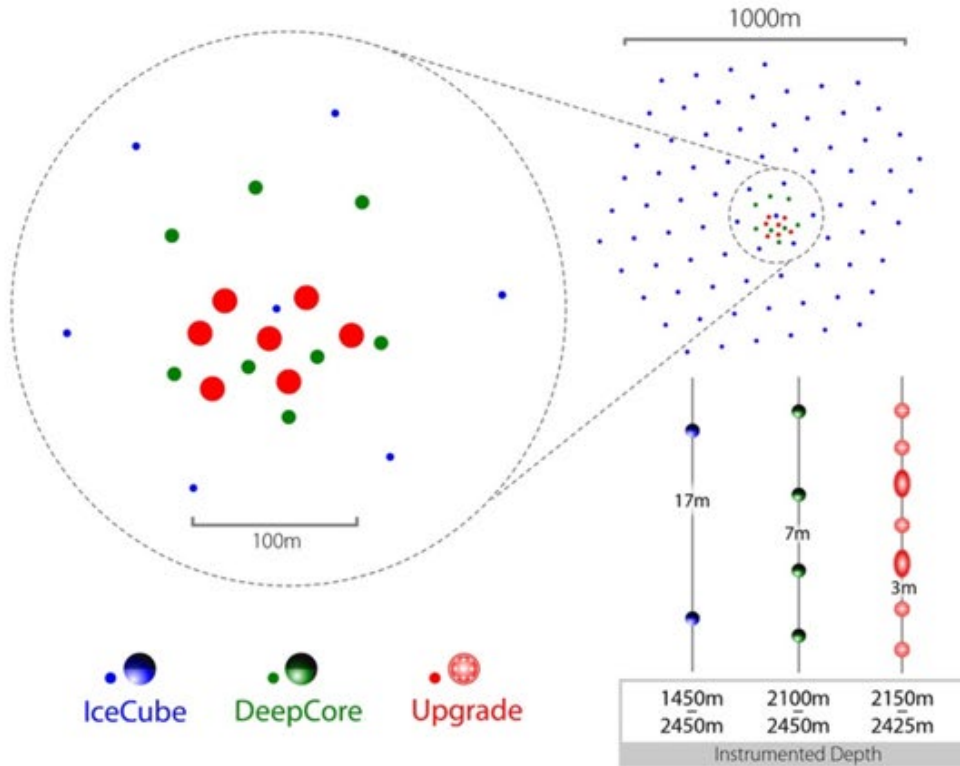
- Module design (segmented PMT) + array geometry (photocathode density) determine reconstruction accuracy in function of E
- Array geometry (instrumented volume) determines event rate
- IceCube provides surrounding veto for background elimination
- New calibration instruments (cameras, flashers, POCAM, Pencil Beam) probe ice properties on baselines shorter than 1 scattering length and with enhanced precision.
- Increased instrumentation density → more modules per wire pair → power + B/W constraints
- Upgrade array must interoperate seamlessly with IceCube (“just another string or set of strings”) – module communication standardized by ICM (“all devices speak DOM”)



# Project Objectives (Unchanged Since 2016)



- mDOM
- DEgg
- pDOM
- POCAM
- FOM
- WOM
- LOM
- Pencil Beam
- Radio Pulsers
- Radio Receivers
- DM ice



7 strings - 693 Optical sensors:

- 277 D-Eggs (2x 8" PMT)
- 402 mDOMs (24x 3" PMT)
- 14 PDOMs
- Calibration devices

2 Mton effective volume for LE neutrino events:

- trigger down to 1 GeV
- 90% efficient at 3 GeV

Single Drill / Install Season

1. Neutrino Properties
2. Recalibration and Reanalysis of IceCube Data
3. IceCube-Gen2 Research and Development

# The Four Pillars of the Upgrade

## National Science Foundation

MPS/PHY Funded (\$22.983M original TPC)

GEO/OPP provides logistics support including cargo, fuel, on-ice field work and population support **not costed in Project budget.**

## IceCube Upgrade Project

- Project Management
- Drilling & Installation
- Sensors
- Cable Systems
- Calibration
- M&O Data Systems Integration

## IceCube M&O

Supports integration of Upgrade Project into IceCube Detector and Software Systems– much of M&O Data Systems labor resources are supported by the M&O program.

**Upgrade will transition into mature operations program at little additional cost.**

## IceCube Collaboration

Collaboration in-kind contributions of instrumentation: D-Eggs, mDOMs, calibration devices, and downhole raw cable – approx. \$14M (F. Feyzi presentation in PM breakout)

Collaboration labor and computing resources coordinated through M&O structures.

# THE ICECUBE COLLABORATION

## AUSTRALIA

University of Adelaide

## BELGIUM

Université libre de Bruxelles  
Universiteit Gent  
Vrije Universiteit Brussel

## CANADA

SNOLAB  
University of Alberta–Edmonton

## DENMARK

University of Copenhagen

## GERMANY

Deutsches Elektronen-Synchrotron  
ECAP, Universität Erlangen–Nürnberg  
Humboldt–Universität zu Berlin  
Karlsruhe Institute of Technology  
Ruhr-Universität Bochum  
RWTH Aachen University  
Technische Universität Dortmund  
Technische Universität München  
Universität Mainz  
Universität Wuppertal  
Westfälische Wilhelms-Universität  
Münster

## JAPAN

Chiba University

## NEW ZEALAND

University of Canterbury

## REPUBLIC OF KOREA

Sungkyunkwan University

## SWEDEN

Stockholms universitet  
Uppsala universitet

## SWITZERLAND

Université de Genève

## UNITED KINGDOM

University of Oxford

## UNITED STATES

Clark Atlanta University  
Drexel University  
Georgia Institute of Technology  
Harvard University  
Lawrence Berkeley National Lab  
Loyola University Chicago  
Marquette University  
Massachusetts Institute of Technology  
Mercer University  
Michigan State University  
Ohio State University  
Pennsylvania State University

South Dakota School of Mines  
and Technology  
Southern University  
and A&M College  
Stony Brook University  
University of Alabama  
University of Alaska Anchorage  
University of California, Berkeley  
University of California, Irvine  
University of Delaware  
University of Kansas  
University of Maryland

University of Rochester  
University of Texas at Arlington  
University of Utah  
University of Wisconsin–Madison  
University of Wisconsin–River Falls  
Yale University

## FUNDING AGENCIES

Fonds de la Recherche Scientifique (FRS-FNRS)  
Fonds Wetenschappelijk Onderzoek-Vlaanderen  
(FWO-Vlaanderen)

Federal Ministry of Education and Research (BMBF)  
German Research Foundation (DFG)  
Deutsches Elektronen-Synchrotron (DESY)

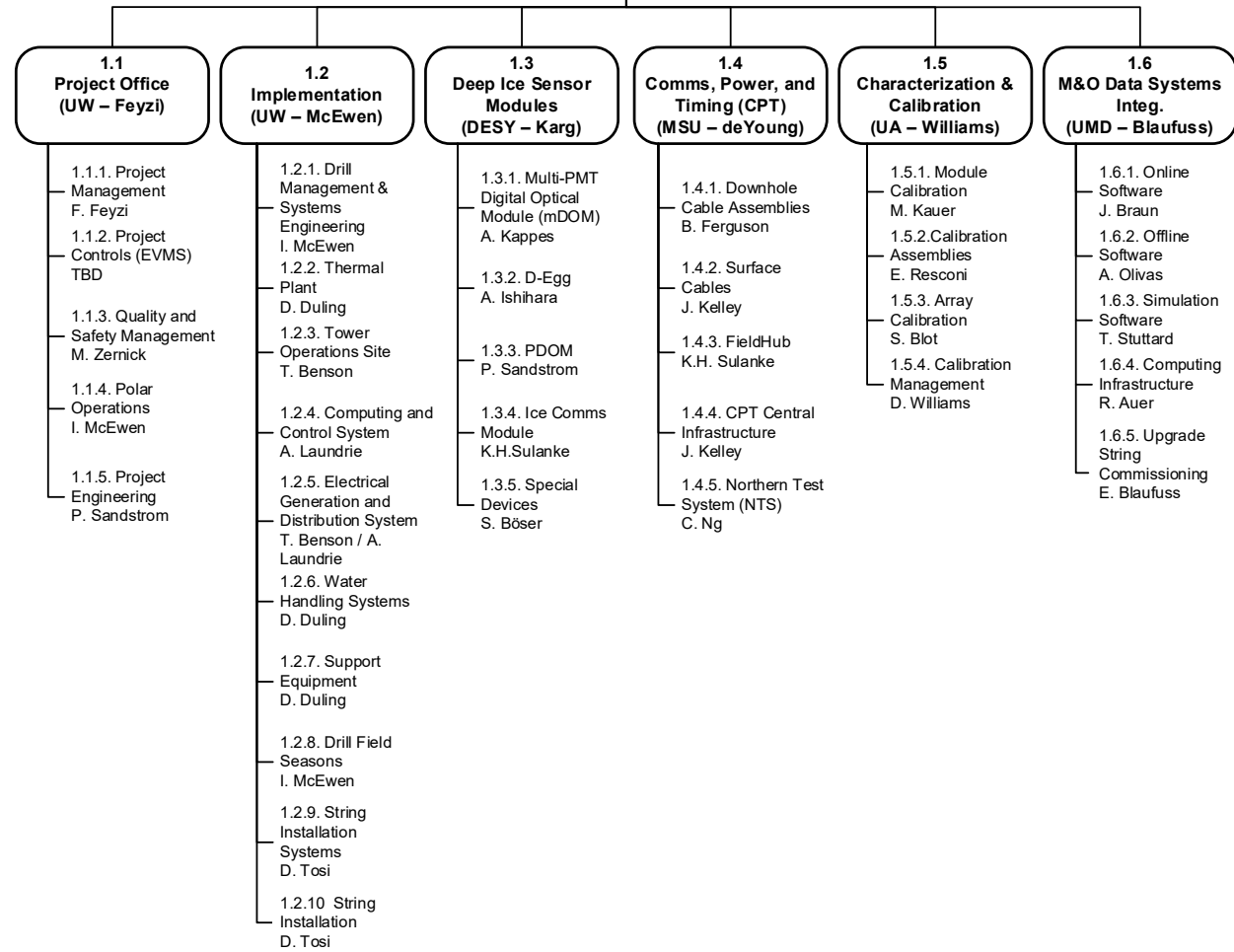
Japan Society for the Promotion of Science (JSPS)  
Knut and Alice Wallenberg Foundation  
Swedish Polar Research Secretariat

The Swedish Research Council (VR)  
University of Wisconsin Alumni Research Foundation (WARF)  
US National Science Foundation (NSF)



icecube.wisc.edu

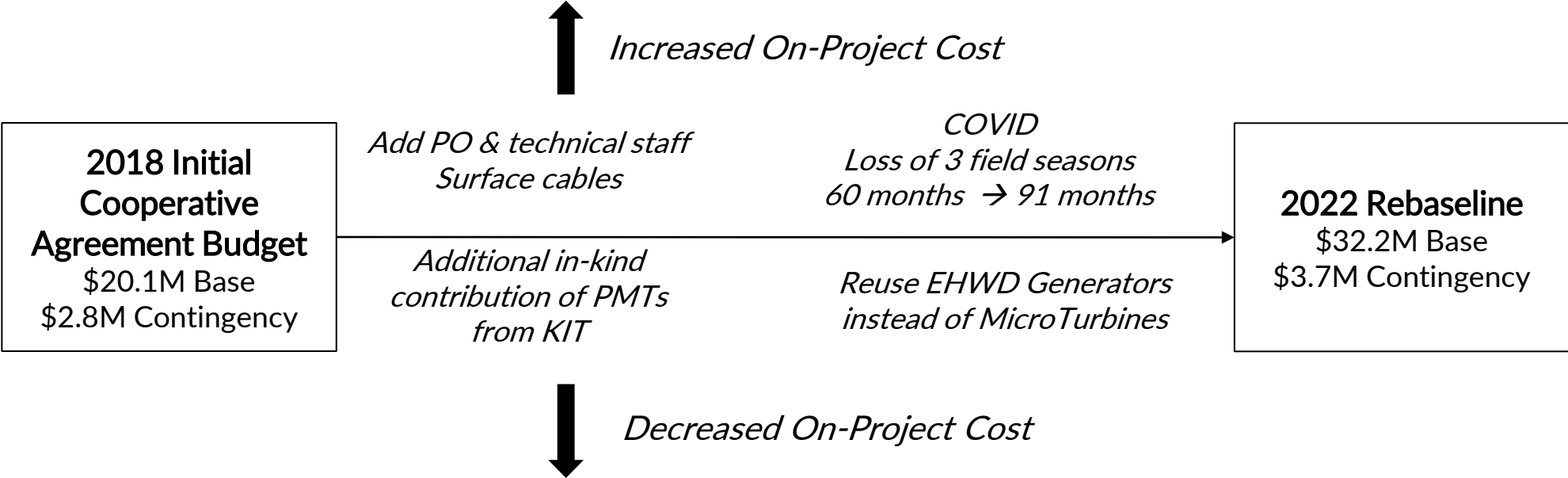
**IceCube Upgrade Project Office**  
 Principal Investigator: K. Hanson  
 Project Director: V. O'Dell  
 Project Manager: F. Feyzi  
 Project Controls: TBD  
 Technical Coordinator: M. DuVernois  
 Project Engineer: P. Sandstrom  
 Safety/ QC/ QA: M. Zernick  
 Logistics: I. McEwen



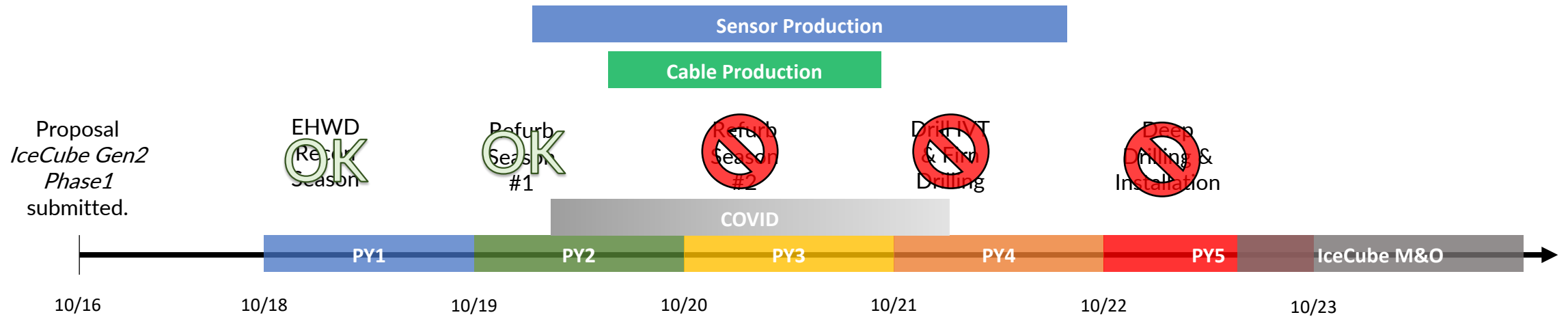
Following talks by L2 managers will go into further detail on major deliverable areas. WBS deliverables defined through *WBS Dictionary* to L4 *and* under change control.

WBS Tree structured functionally not by institution.

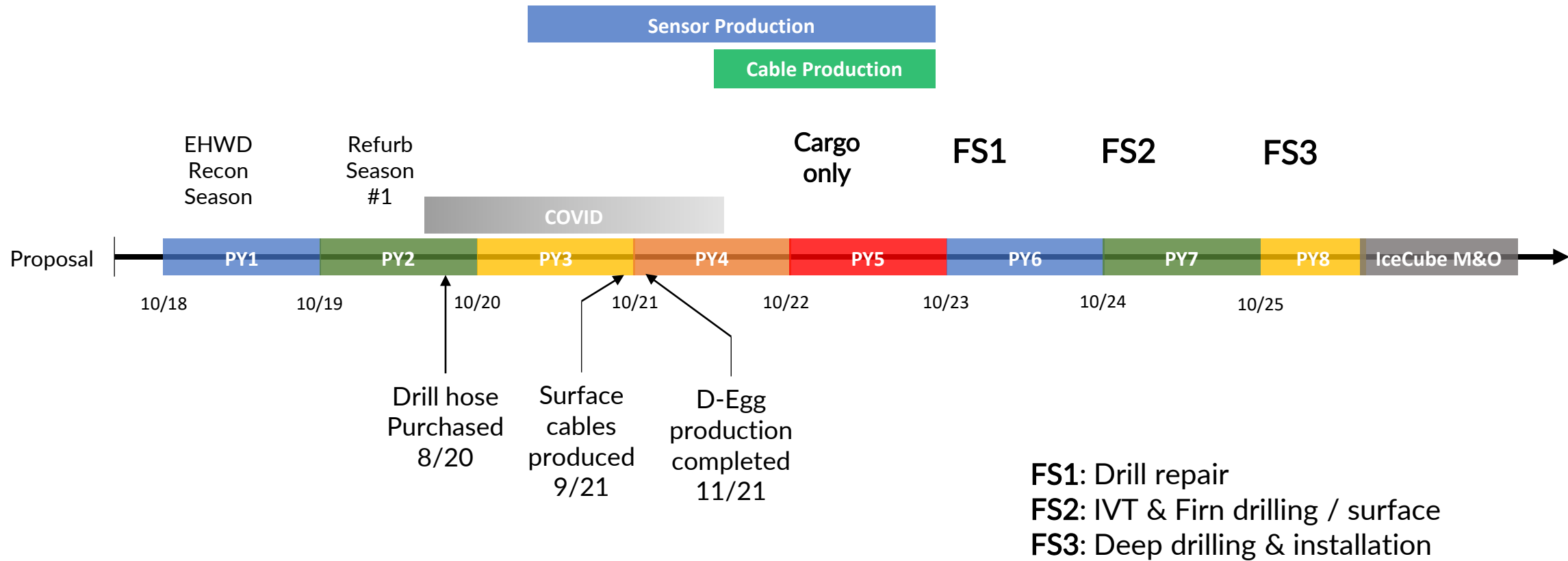
# Cost (vs Time)



# Simplified Project Timeline – Baseline Plan



# Simplified Project Timeline – Rebaseline 2022



# Hand-Off To IceCube Operations

- Handoff to IceCube M&O following FY26 drilling, installation, commissioning of strings : Milestone date is 04/06/2026 – this is within the first week of the next M&O cycle.
- Project complete 04/30/2026.
- Drill equipment packed during FY26 season, ready to retro.
- Retro to occur with small field team under M&O following season, or, alternatively equipment could remain on site for IceCube-Gen2 activities.



# Considerations for the Next 2 Days

- Upgrade scientific objectives and technical scope remain unchanged 5 years after original proposal.
- The project has made significant progress: 300 of the 700 DOMs are completed; drill has completed recon and repair seasons; over \$2.5M in major equipment purchases.
- Three-year delay principally due to COVID – the project has matured as a result and developed the rigor not only to complete the Upgrade scope, but also to transition to future larger-scale endeavors.