

IceCube-Gen 2

Albrecht Karle
University of Wisconsin-Madison
Marek Kowalski
DESY

IOFG meeting
September 28, 2020

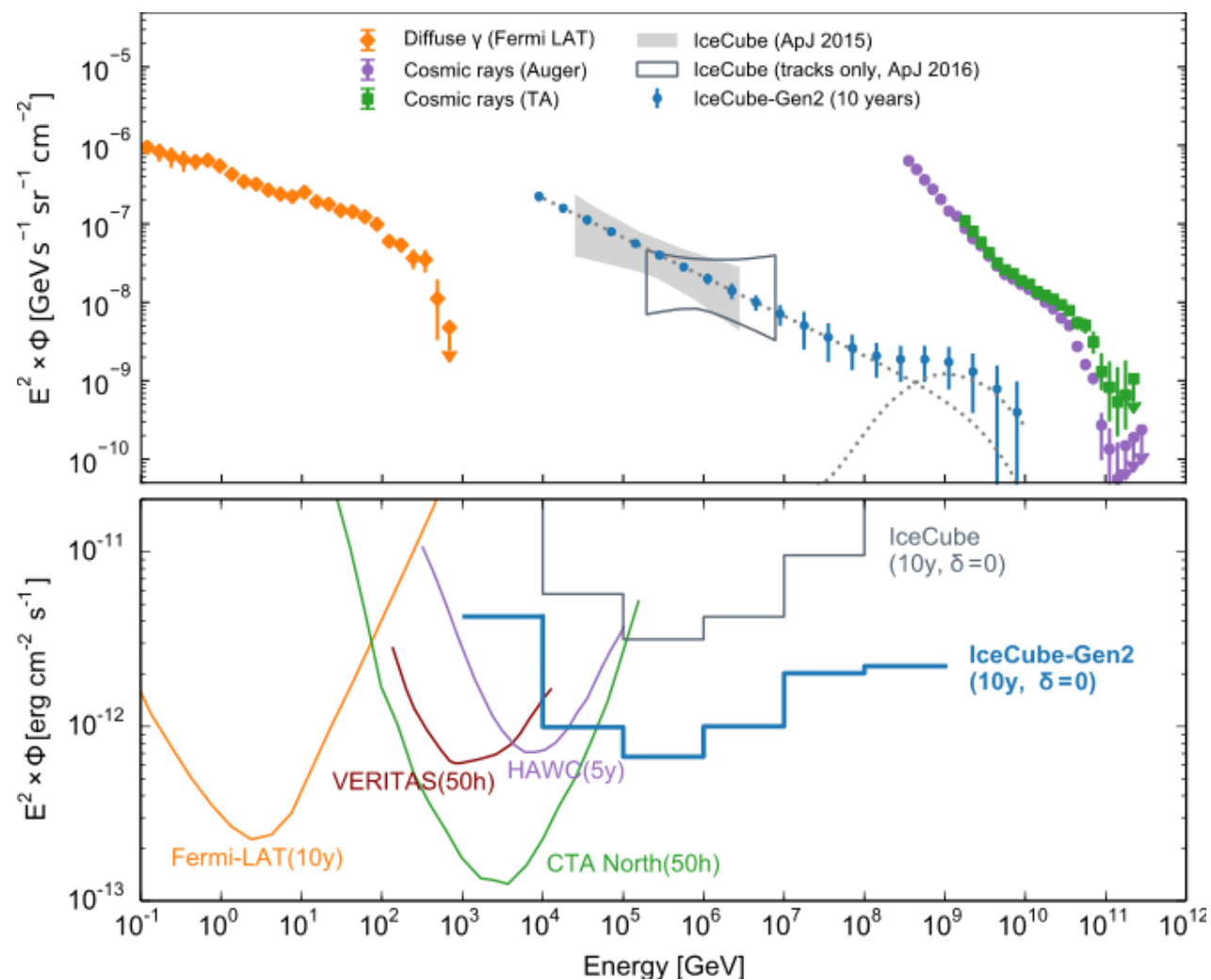
- Science
- Scope
- Project status
- Cost and schedule
- Project development



ICECUBE
GEN2

Science defines the requirements

Understanding cosmic particle acceleration through multimessenger observation



ICECUBE
GEN2

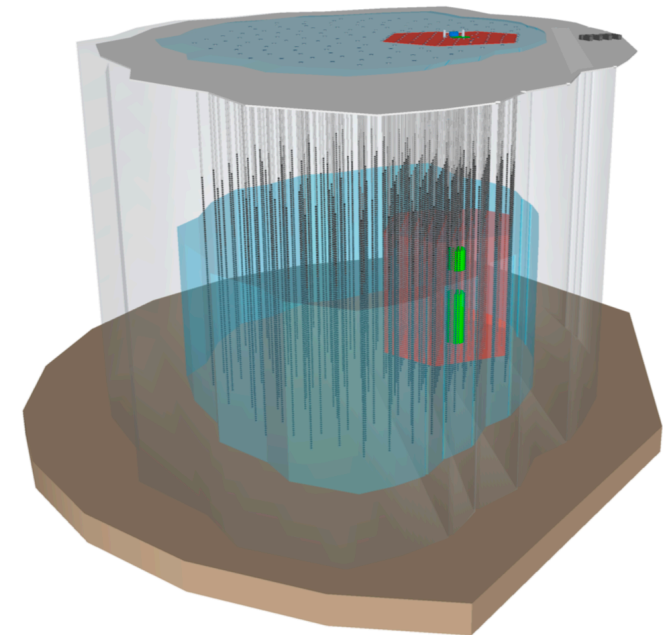
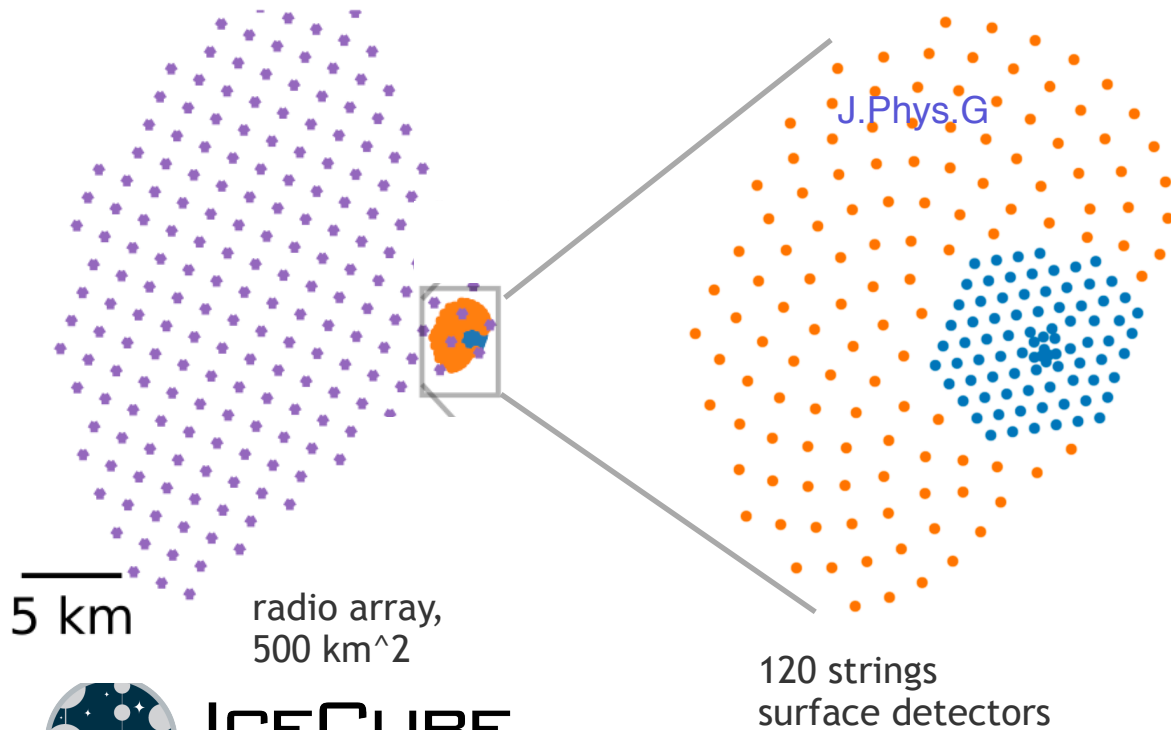
Completing the multi-wavelength view of the Universe

IceCube-Gen2: Scope

Optical Array of 120 strings with 100 sensors each
Surface array: for cosmic rays and veto
Radio Array: 500 km² for neutrino detection above
10 PeV

References:
[Submission to Decadal Survey](#) on Astronomy and
Astrophysics 2020

White paper: IceCube-Gen2: The Window to the
Extreme Universe.
(accepted in J. Physics G, [arxiv.org/abs/2008.04323](#))



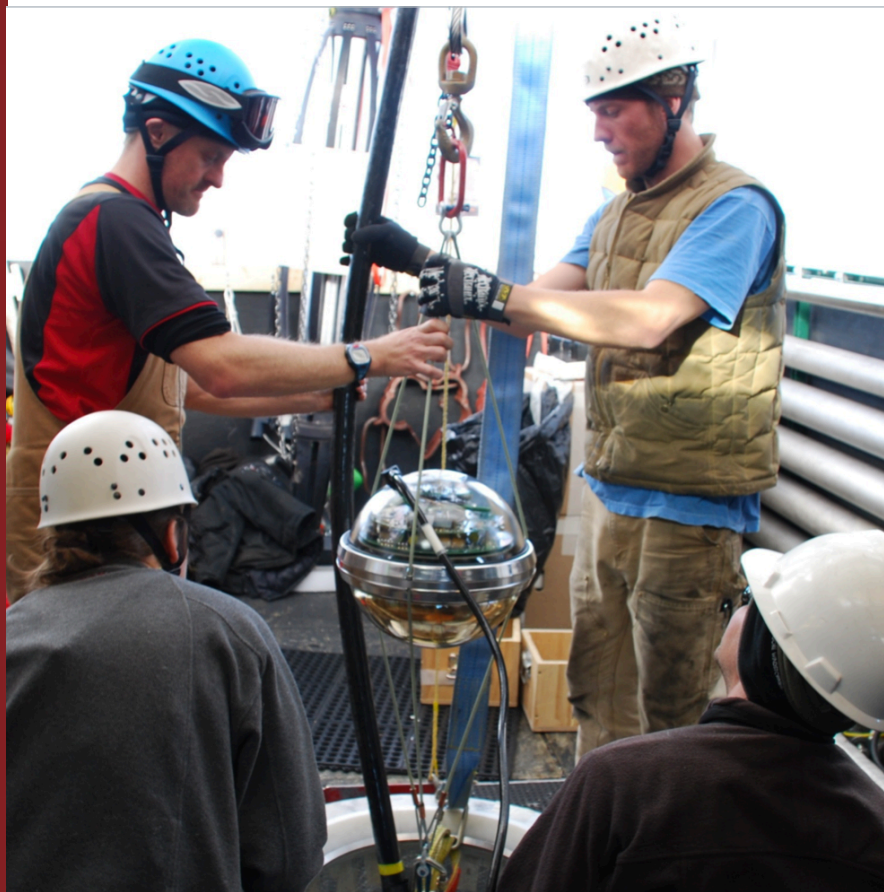
Artist's conception
120 strings at 240 m spacing



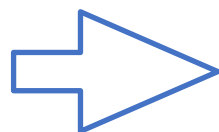
ICECUBE
GEN2

Advances in optical sensors

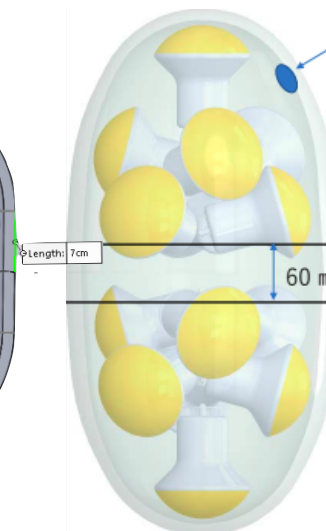
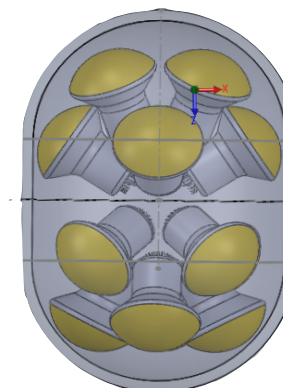
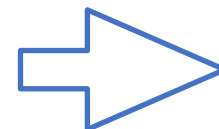
Building on understood technologies.



IceCube Upgrade



IceCube-Gen2



ICECUBE
GEN2

The Gen2 radio array

Reference design:

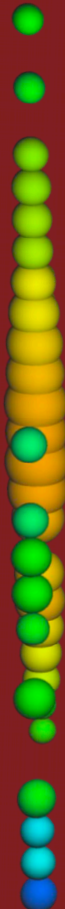
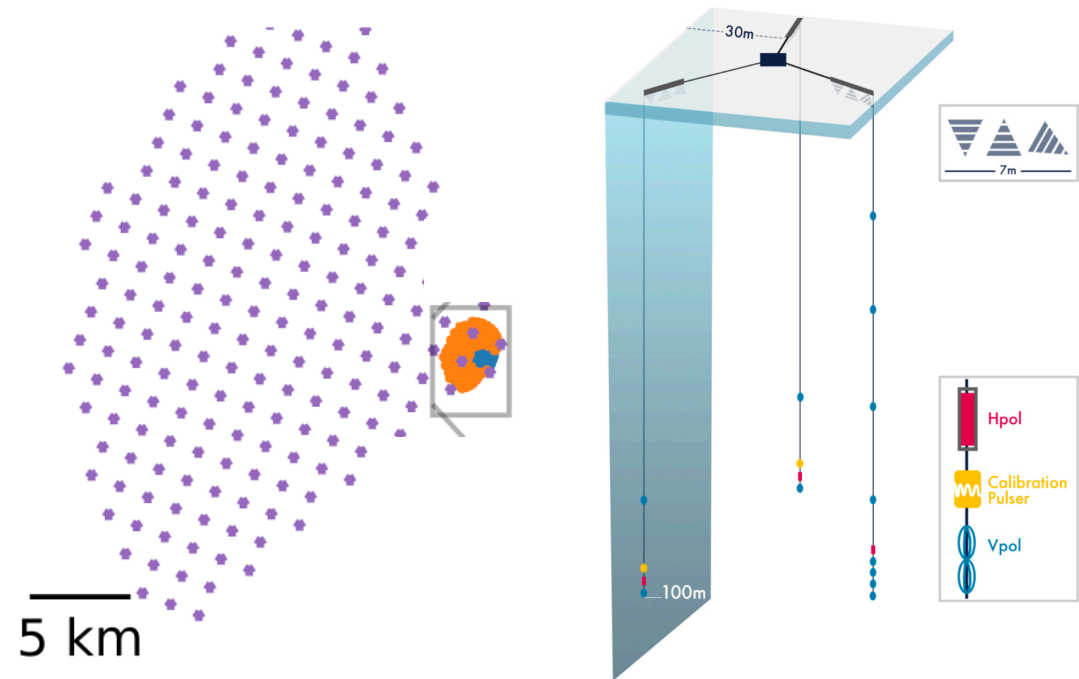
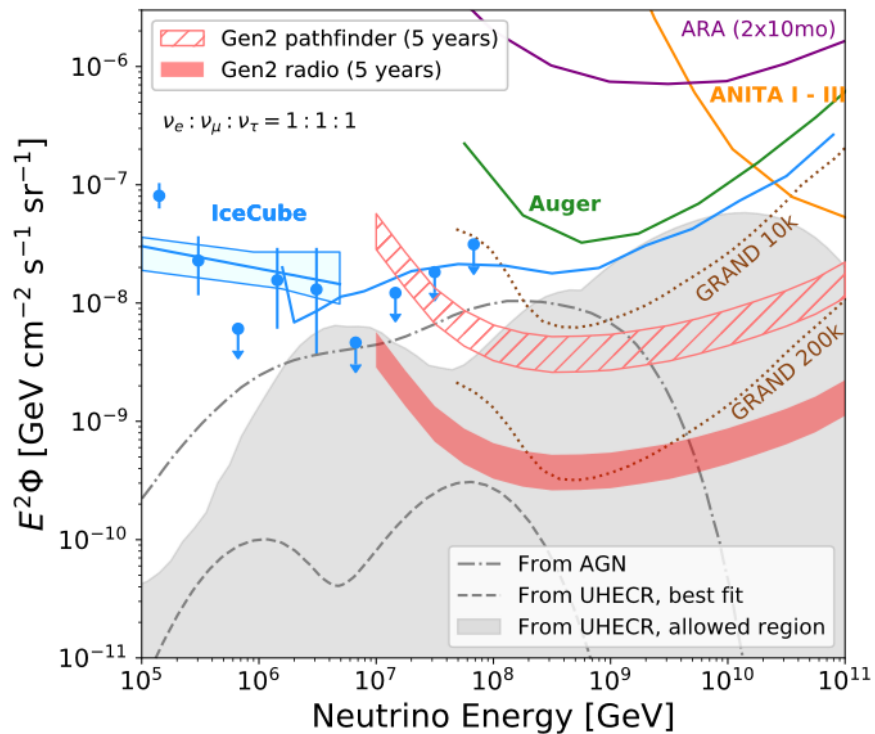
- 200 stations, similar to RNO design.
- Input from ARA, ARIANNA, RNO-G.

RNO-G preparing deployment of 10 stations in 2021 in Greenland.

Important for RNO-G to move forward (like Upgrade in the optical)

New drill from British Antarctic Survey secured. Important test ground for Gen2 radio.

- Gen2-radio working group formed.
- Unified community effort around Gen2 radio.
- Assigned Task Force assigned to advance and detail the conceptual design.



IceCube infrastructure

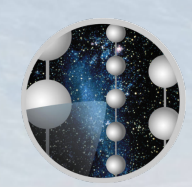
Cost advantages of Gen2 compared to Gen1

IceCube exists and is running.

- > Experience allows for optimization of construction and reduce risks
- > Gen2 can be essentially integrated into Gen1.
- > Significant savings in design effort eg for DAQ and data systems.
- > Benefit of established IceCube Maintenance and Operations that will provide a host environment.



ICECUBE
GEN2



Drilling

Mobile drill/deployment towers

Hose reel

EHWD heating plant: stationary
—> Gen2: mobile



Gen2 hot water drill: significant recent advances.

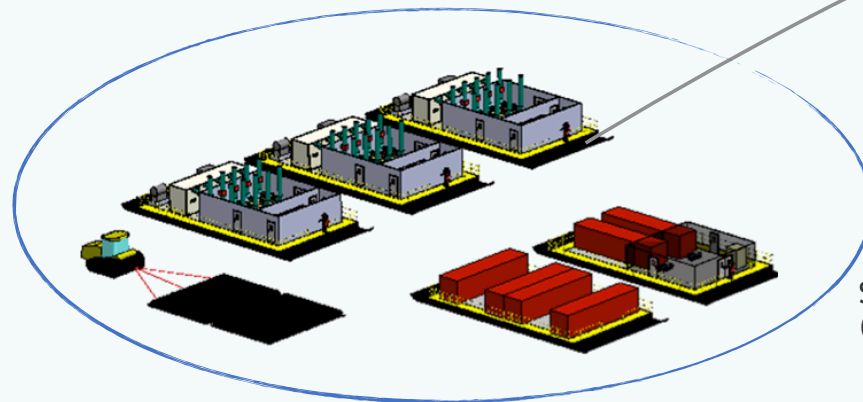


- Evolution:
 - IceCube drill
 - —> Upgrade: refurbishments and modifications
 - —> Gen2 configuration
- Construction on large sleds:
 - Transport to Pole and mobility at Pole

Condensed Tower operations site
- deep drilling ops
- moves every hole



Hot water (low pressure) hose
Up to >500m,



Seasonal equipment site
(power, heaters, water storage,...)

Logistical Support

1. Logistical Support: IceCube Gen1 had 9.5 million lb of cargo + fuel delivered by plane, more than 300 LC 130 missions. Construction took place simultaneously with South Pole station completion and SPT construction.
2. In recent years logistical support has dropped compared to 10 years ago. However, funding for logistical support is provided by the project.
3. Strategies for logistical support exist and have been discussed with ASC.
 1. Population of 60 people: —> separate field camp.
 2. Cargo: Traverse is scalable and can take care of fuel (2/3) and possibly cargo but this is not current practice.
4. Successful support will require high level prioritization and strategic planning at NSF's Polar Program.



ICECUBE
GEN2

Cost

L2	Task	Total cost	In-Kind	NSF
1.1	Project Office	28.1	.0	28.1
1.2	Implementation	61.6	.0	61.6
1.3	Instrumentation - Deep	151.9	64.0	87.9
1.4	Instrumentation - Radio	25.9	5.0	20.9
1.5	Data Systems	13.1	.0	13.1
1.6	Commissioning and Calibration	12.2	.0	12.2
1.7	ASC Coordination / Polar Support	53.9	.0	53.9
Total w/o contingency		346.8	69.0	277.8
Contingency		61.1		61.1
Total with contingency		407.9	69.0	338.9

Cost as submitted to Astro 2020 review.

Cost Drivers:

- > Instrumentation: 12,000 Optical modules for the array of 120 deep strings
- > Construction: Implementation (Drilling + installation) and Antarctic Support.

Contingency:

- DOMs provide options for scope contingency.



ICECUBE
GEN2

International collaboration

Building on history:

- IceCube-Gen2 builds on 30 years of collaboration from AMANDA to IceCube. Early 1990ies Sweden and then Germany joined forces with US groups to develop AMANDA and 10 years later IceCube.
- Today evenly split between US and -Non-US.
- Strong traditions and well established relations.

Large contributions:

- For Gen2, the hardware contributions almost 1/2 of instrumentation.
- Assumed contributions expressed monetarily: \$69M (In US accounting this would be well above \$100M*)
- Contributions in other areas, including logistics and field work being explored.

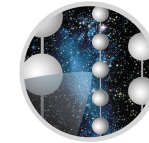


ICECUBE
GEN2

*Coordination at all levels important,
- in project development and funding process*



ICECUBE
GEN2



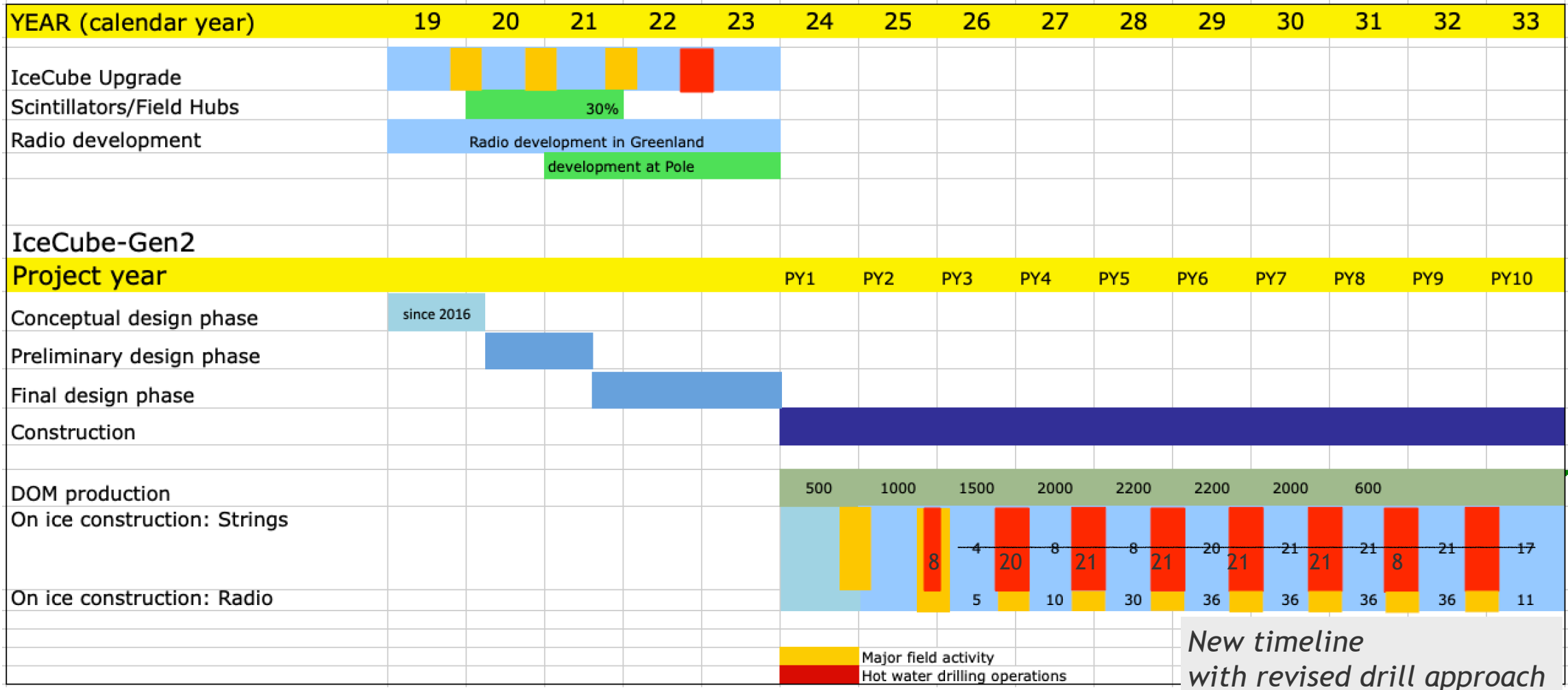
ICECUBE

Footnote:

* The construction of the budget will usually under-represent in-kind contributions for two reasons:

- contributions are formulated primarily as hardware and other products.
- —> contingency is largely owned by the country that commits hardware.
- Labor does not even appear as contribution and is supported off project.

Timeline



New timeline with revised drill approach

Notes:
 Drilling, new approach: 1.5 seasons shorter, also cost savings.
 No formal linkage between Upgrade and Gen2
 No formal linkage between RNO-G (or Arianna) and Gen2



Developing Project

Next big milestone: 'Preliminary Design', currently targeted for fall 2021.

The Preliminary Design is a very important step. It forms the basis for starting the funding process.

(Perhaps similar to the Helmholtz roadmap in Germany, where a pre-proposal for Gen2 is in preparation for submission by end of October.)

- **Ramping up** vigorous efforts to develop project, build a project team.
 - Started serious engineering effort on drilling.
 - Recruiting personnel, including project manager

Near term:

Internal reviews in January/February.

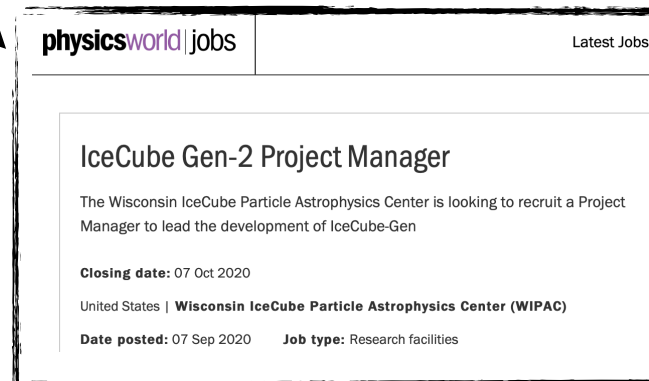
Possible workshop later in spring 21, perhaps May, immediately after Astro2020 decadal review report released.

Challenges:

A lot of work in the next 12 months.

Coordination of funding processes in different countries.

Bridging from Gen2 development phase and Upgrade to Gen2 construction



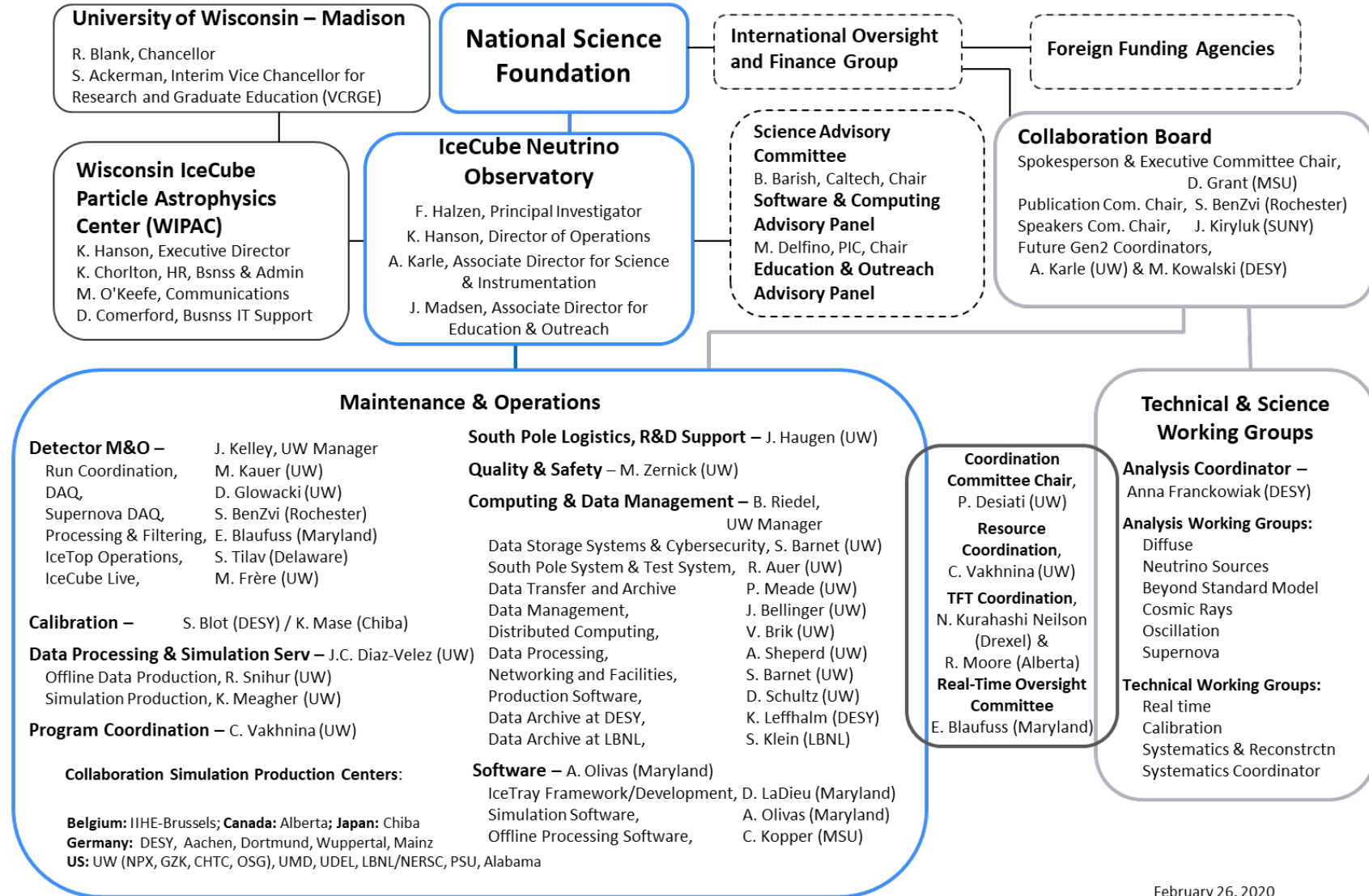
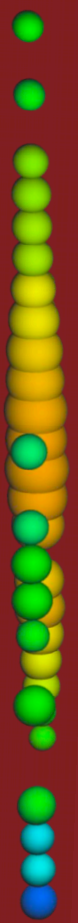
ICECUBE
GEN2

Backup slides



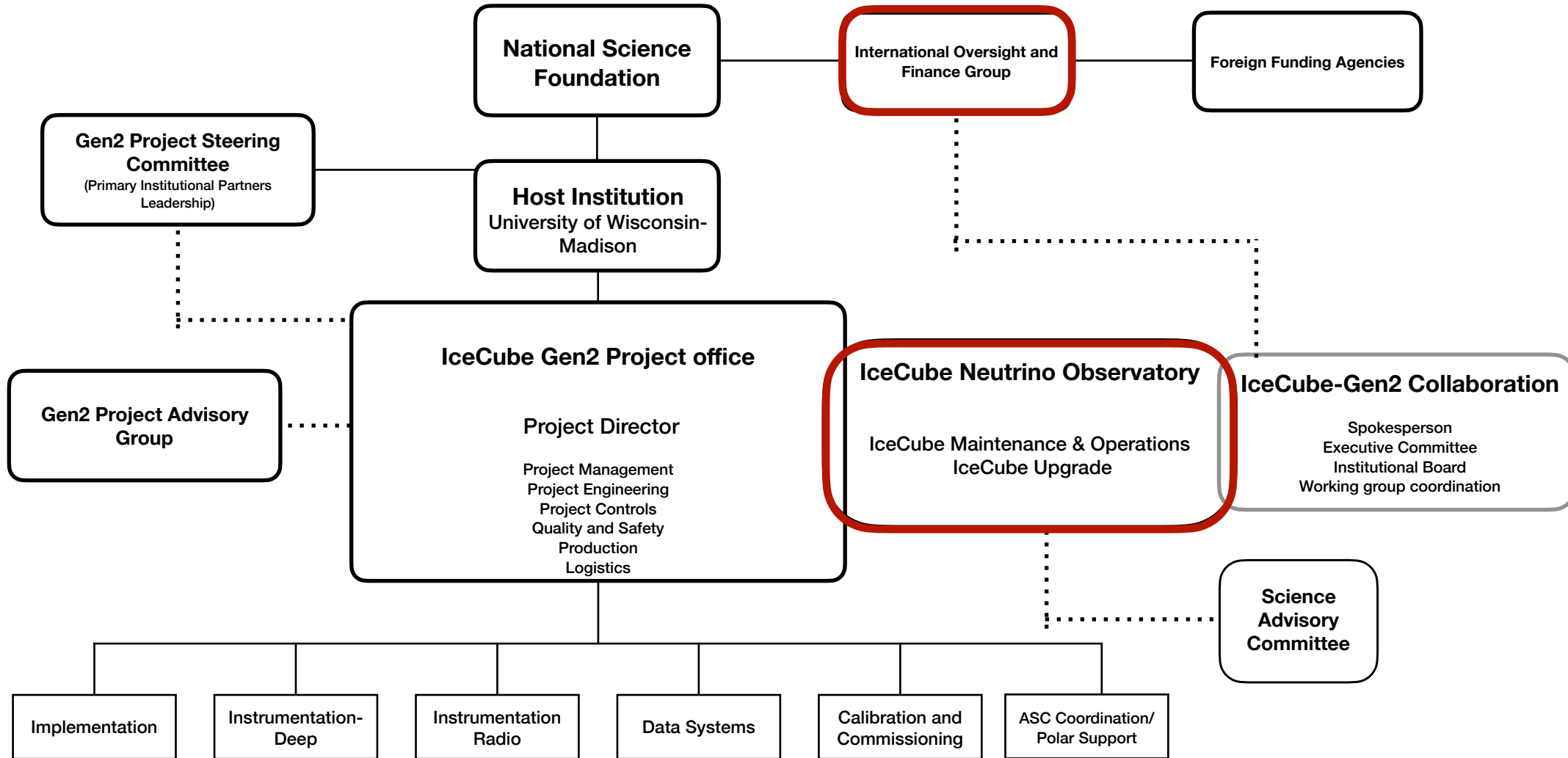
ICECUBE
GEN2

IceCube Organization Structure



ICECUBE
 GEN2

IceCube-Gen2 Organization Structure

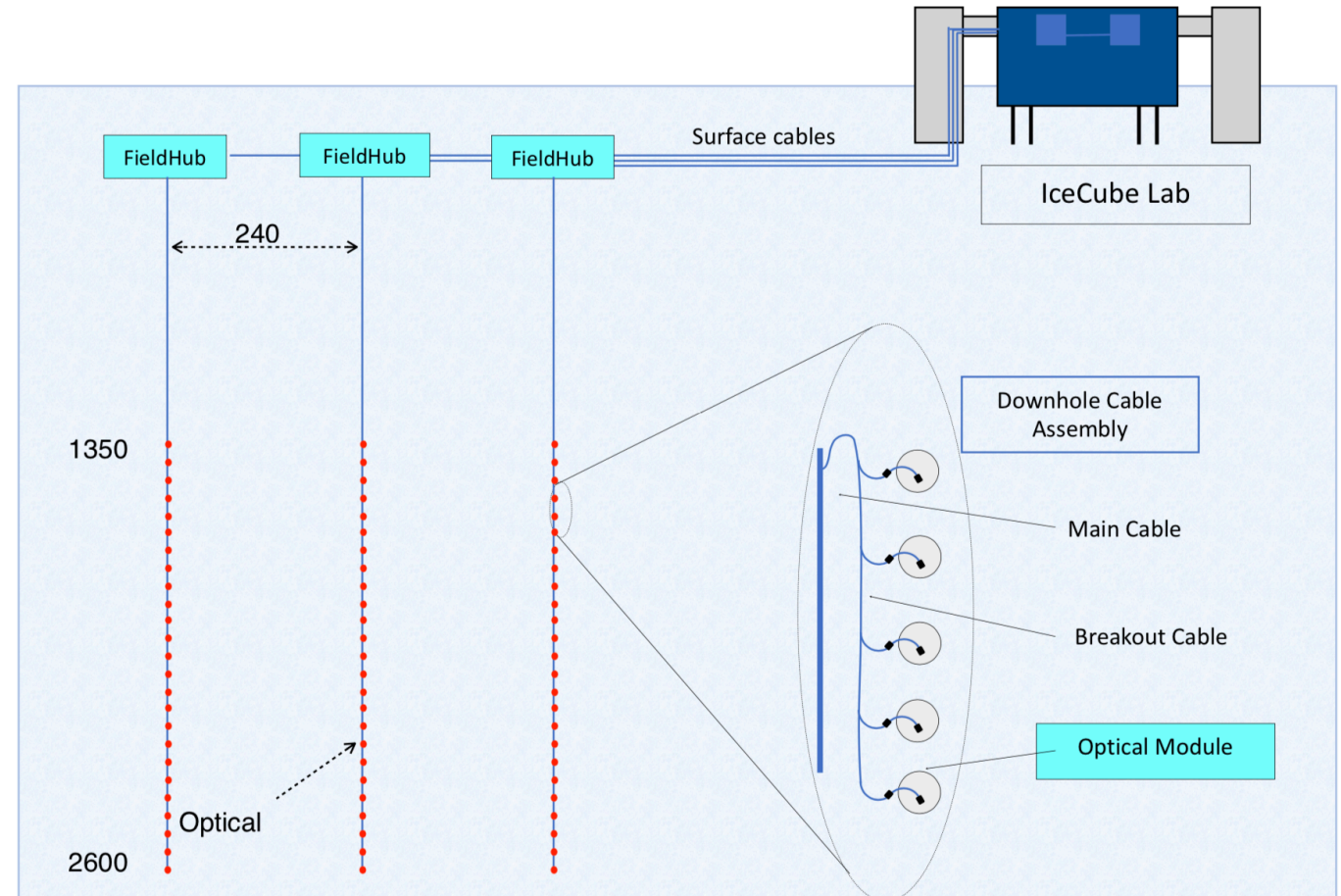


ICECUBE
GEN2

Power and communications architecture

A safe strategy with room for optimizations and cost savings.

- Reference design
 - Adiabatically evolved from IceCube: copper for power and comms, use field hub to switch comms from copper to fiber.
 - Less copper needed (~1/2)
- R&D for alternate approach:
 - Optical fiber all the way to deep ice. Locally switch to comms on copper.



ICECUBE
GEN2